

KOBELCO Process Compressors – Excellence of Technology –

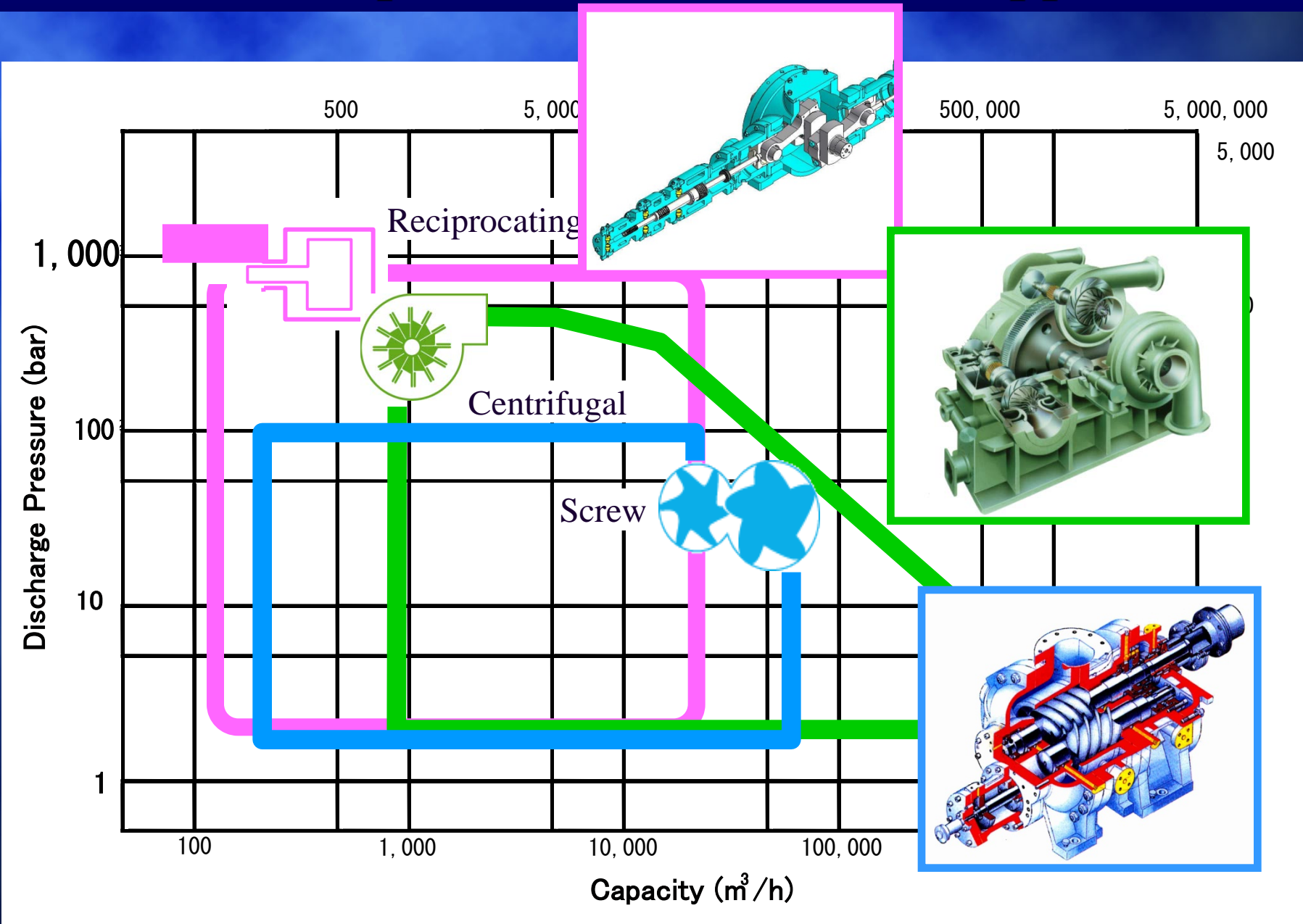
Screw, Centrifugal and Reciprocating Compressors



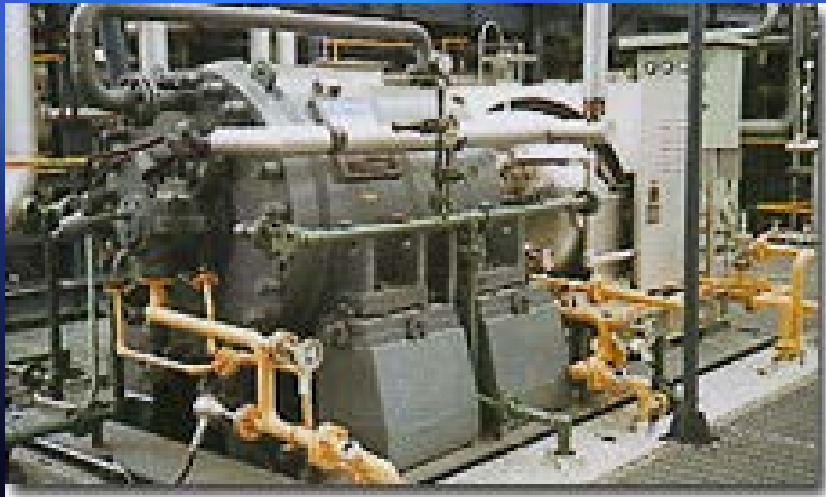
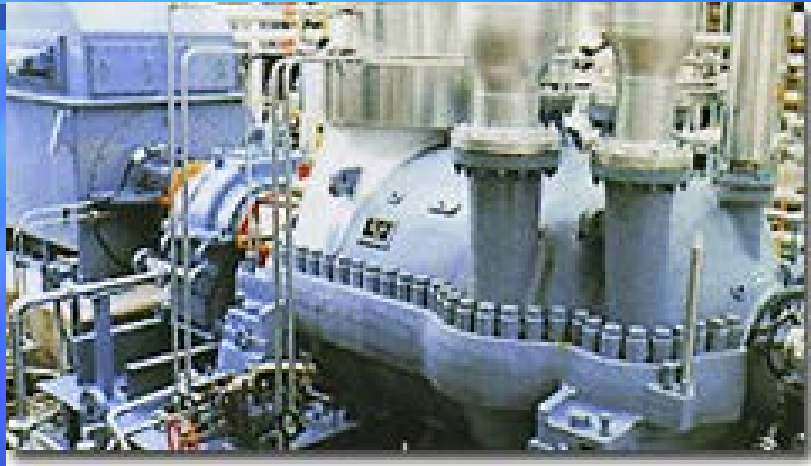
Kobe Steel, Ltd.

Machinery & Engineering Company

KOBELCO Compressors in Process Gas Applications



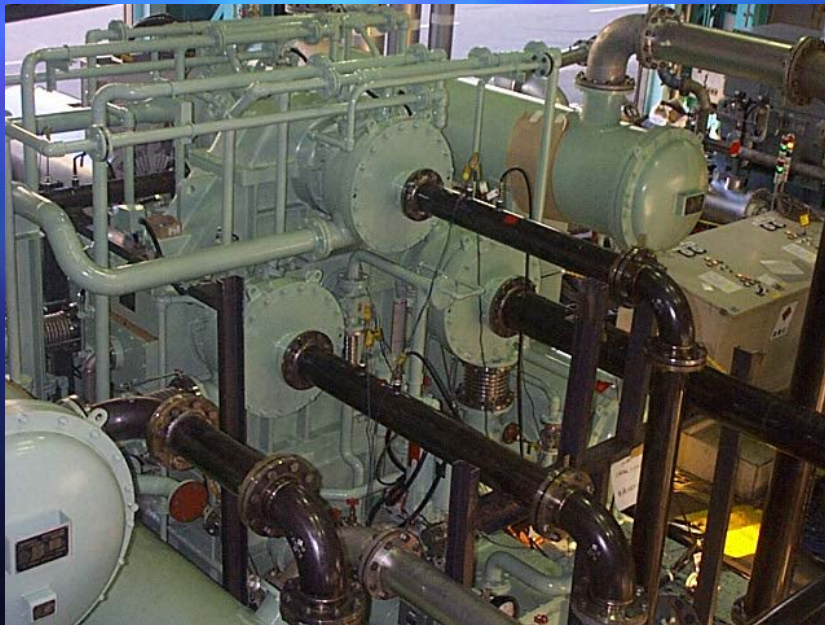
KOBELCO Centrifugal Compressor - Conventional Type -



KOBELCO

KOBELCO SUPERTURBO

– Integrally-Geared Centrifugal Compressor –
for Gas Services



KOBELCO

KOBELCO Reciprocating Compressor



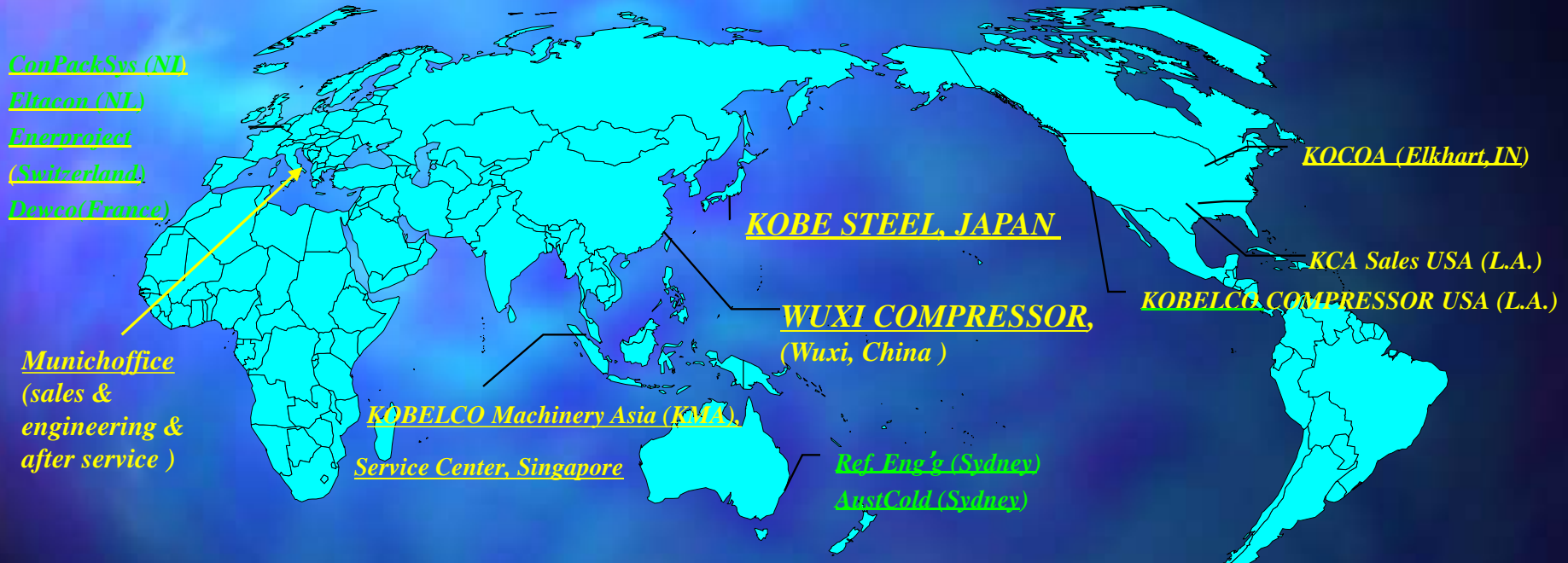
KOBELCO DRY Screw Compressor



20MW Centrifugal Compressor Test Facility Layout



World Cooperation Network:



Country	Location	Company name	Works
Japan	Takasago	KOBE STEEL, LTD	Manufacturing, design compressors
	Harima	KOBELCO COMPRESSOR CO (KCC)	Manufacturing, design compressors (standard)
China	Tianjin	KOBELCO COMPRESSOR CO (KCC)	Manufacturing, design compressors (standard)
	Wuxi	WUXI COMPRESSOR	Manufacturing, design compressors
Singapore	Singapore	KOBELCO MACHINEY AISA (KMA)	After service center
UAE	Dubai	KOBE STEEL, LTD	After service center
Europe	Munich (Germ)	KOBE STEEL, LTD	Sales, engineering, after service
USA	Corona (L.A.)	KOBELCO COMPRESSOR USA (KCA)	Manufacturing (package), design compressors
	Elkhart (I.A)	KOCOCA	Manufacturing, design compressors (standard)
	Houston (T.X)	KOBELCO COMPRESSOR USA (KCA)	Sales, engineering, after service



KOBELCO TAKASAGO MOTHER SHOP



KOBELCO COMPRESSORS AMERICA

Off Shore
Vapor Recovery
Compressor in Brazil

